

# Pythian's Data Loss Prevention (DLP) Program for Google Workspace

## Keep up with the pace of cyber threats

The human element continues to be one of the top threat vectors for organizations of all sizes. As cyberattacks continue to increase and regulatory and compliance requirements become stricter, getting ahead of data loss in Google Workspace is becoming even more crucial.

Human error often plays a major role in cyberattacks — whether it's an error, neglecting a software security update, or falling prey to a social engineering attack, such as phishing, baiting, whaling, or business email compromise. Indeed, 68% of data breaches involve a non-malicious human element. Phishing attempts, however, are becoming much more sophisticated, personalized, and contextual, thanks to AI.

Considering it takes an average of 258 days for security teams to identify and contain a data breach, staying on top of the latest threats is more important than ever. Google Workspace is built to withstand today's complex threat landscape and meet evolving compliance requirements — but prevention is key. Strengthening your Data Loss Prevention (DLP) strategy, especially by accounting for human behavior, is essential to minimizing risk.

## Pythian's Data Loss Prevention Program

With Pythian's Data Loss Prevention (DLP) Program, we'll assess your current environment and help you design and implement a DLP program to protect sensitive data in Google Workspace through a comprehensive, end-to-end solution.

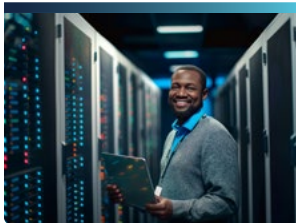
This program provides a thorough assessment of your current DLP status, documents and implements data protection requirements, manages the DLP program end-to-end, oversees change management, and delivers training for effective administration and management in Google Workspace.

## Highlights

- Pythian's four-phase DLP Program for Google Workspace can be launched in just 3 to 6 months, helping you reduce risk quickly and effectively.
- The program includes a comprehensive, four-phase approach — from assessment and proof of concept to pilot and global rollout — to ensure long-term data protection success.
- Pythian delivers people-first DLP solutions that empower teams while maximizing the value of your Google Workspace investment.

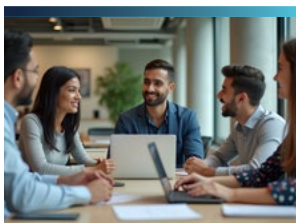
## How it works

After a kick-off session, there are 4 phases to the program, which take place over 3 to 6 months.



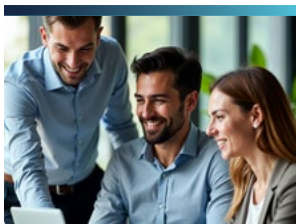
### Phase 1: Establish DLP governance

We'll conduct a thorough assessment of your current DLP status and develop a governance strategy, including document requirements, implementation steps, stakeholder matrix, and support model.



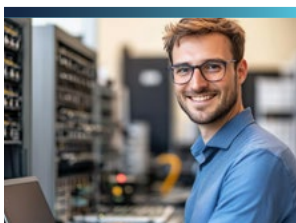
### Phase 2: Implement a proof of concept

Our team of experts will work with your team to develop a proof of concept aligned with your data protection requirements.



### Phase 3: Pilot DLP within the organization

From there, we'll work with your team to pilot the DLP program. We'll also deliver training modules and oversee change management.



### Phase 4: Global launch

Finally, we'll assist with the launch of the DLP program and manage it from end-to-end.

## Why Pythian?

Pythian goes beyond technical security reviews of Google Workspace, focusing on the human element and change management to ensure your data is protected through a people-first approach. We help your teams understand what was done and why it was done, empowering them for future success.

With Pythian, you can maximize your investment in Google Workspace by leveraging our long-established expertise. An award-winning Google Cloud MSP and Specialization Partner, we provide end-to-end services for all Google Cloud solutions, including Google Workspace.

Our proven delivery method has been used to support some of the world's largest, most complex companies—and we can do the same for you.

---

## Protect your data before a breach happens.

Partner with Pythian to design and launch a people-first DLP strategy for Google Workspace — and stay one step ahead of evolving threats.

[Talk to a Pythian expert today.](#)

### About Pythian

Founded in 1997, Pythian is a data and analytics services company that helps organizations transform how they compete and win by helping them turn data into valuable insights, predictions, and products. From cloud automation to machine learning, Pythian designs, implements, and supports customized solutions to the toughest data challenges.

© Pythian Services Inc. 2025

### Contact us

+1-866-798-4426 | [info@pythian.com](mailto:info@pythian.com) | [LinkedIn](#) | [X](#)

### Offices

Ottawa, Canada

Minneapolis, USA

New York City, USA

London, England

Hyderabad, India

Bangalore, India

love your  data