

Pythian AgentSpace QuickStart Service

Google AgentSpace empowers enterprise AI search to fast-track productivity gains. Drive AI adoption across all departments at your organization and achieve immediate results from your AI investments.

The Enterprise Search Problem

An inability to find information across knowledge bases hinders employee productivity.

The average enterprise has more than 1,000 applications, yet Salesforce reports that more than 70% of those remain disconnected. This data fragmentation cripples decision-making, fuels duplicated efforts, and stifles cross-departmental collaboration, leading to a poor employee experience. Alarming, 43% of employees would consider leaving a job due to inefficient information access.

Because of these information gaps, organizations lose critical business opportunities, new revenue streams, and a competitive edge. Dependence on memory or external data sources heightens compliance and security risks, while IT departments face a surge in service requests.

The result? Untapped data becomes a crippling liability, directly eroding your bottom line. Don't let information silos drain your profits—unlock your enterprise's true potential with Pythian and Google AgentSpace.

Google AgentSpace

Google's new multimodal AI search and agents bring together data across your entire enterprise for faster, more relevant answers.

AgentSpace combines Gemini's advanced reasoning and Google-quality search with your enterprise data. By integrating with both first-party and third-party data connectors, it allows for seamless data retrieval and enhanced search in a single user interface.

Across its products, including AgentSpace, Google is committed to data privacy. Customers own their data, not Google. Google never sells customer data to third parties, doesn't use customer data for advertising, and doesn't use customer data to train large language models (LLMs) for AI.

Highlights

- Accelerate enterprise productivity with Google's multimodal search, AgentSpace, and Pythian's deployment expertise.
- Overcome data fragmentation and improve employee experience with seamless information access.
- Rapidly deploy Google's AgentSpace within four weeks, and eliminate lengthy implementation cycles.

Solving real-world business challenges with Agentspace

The power of Google Agentspace lies in its ability to transform how enterprises access, understand, and utilize their vast data resources. By seamlessly integrating Gemini's reasoning capabilities with Google-quality search across diverse datasets, Agentspace offers practical solutions to a wide range of business challenges. Discover the practical applications of Agentspace and how they can enhance efficiency and decision-making:

1

Sales and marketing: Drive revenue growth

With better access to data, sales and marketing teams can increase customer engagement and drive revenue growth.

Use Cases:

- Create personalized marketing messages, product recommendations, and offers based on customer data.
- Analyze performance data, iterate on content, and adjust campaigns without manual effort.
- Summarize issues and feature requests to provide insights to product/engineering teams.

2

Human resources: Improve the employee experience

HR teams can streamline workflows with AI agents, while helping employees quickly find the information they need to do their jobs.

Use Cases:

- Execute actions with employee permission, such as filling out reimbursements, booking PTOs, and downloading recent payslips.
- Assist with performance reviews.
- Assist with writing tasks and scheduling meetings.

3

Software teams: Automate processes and tasks

Development teams can significantly reduce the time they spend on tasks while addressing errors before they occur.

Use Cases:

- Automate complex engineering processes and development tasks.
- Identify and fix bugs, vulnerabilities, and errors before they occur.
- Analyze data to optimize codebases and enhance performance.

Pythian's Agentspace QuickStart

Pythian's new QuickStart service can get you up and running in just four weeks to improve search relevance, enhance user engagement, and do away with organizational silos.

With Pythian's Agentspace QuickStart, we'll get your enterprise up and running with Agentspace in just four weeks. We'll help you identify and prioritize use cases, and then take the lead on development and testing efforts to quickly demonstrate the value proposition of Google's new technology offering. This also allows employees to get familiar with the solution's intelligent search capabilities and conversational assistant for faster enterprise search — without a deep investment.

Get Up and Running with Pythian Agentspace QuickStart in 4 weeks



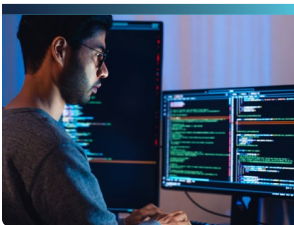
1. Discovery

Pythian will walk you through Google Agentspace to demonstrate how it can work for your business. In collaborative sessions, we will identify relevant AI search and agent use cases specific to your business. With a deeper understanding of how Agentspace will best work for your business, we'll begin architecting a solution for your applications.



2. Design

Our team will design the optimal use cases we've identified together. Pythian will configure two connectors, set up search — such as summarisation, citation, follow-up chat, autocomplete, and actions configuration — and set up one out-of-the-box agent. We will also provide your teams with the technical design documentation.



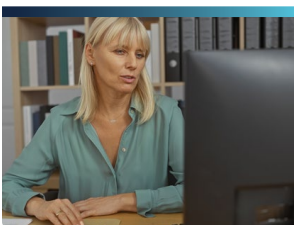
3. Development

Pythian will develop the solution for the agreed design in the target environment. By the end of these two weeks, Agentspace will be set up in the test environment with user roles and permissions configured to begin testing.



4. Testing and optimization

Testing and feedback throughout development will be implemented to prepare Agentspace for deployment. Pythian will transfer knowledge about Agentspace setup, configuration, and testing to your teams, so they have all the tools they need to run the solution in the target environment. You'll also receive a final test report, working solution artifacts, and user guides.



What's Next

Pythian's team of experts can support roll-out and change management to boost user adoption — helping users see the value in enabling enterprise search in their workflows. This includes Agentspace training sessions and transformation workshops. While Agentspace offers out-of-the-box functionality, we can also work with your teams to build custom agents for more advanced capabilities.

Why Pythian?

Pythian's team of experts has a deep understanding of the technology building blocks required to navigate the fast-evolving space of AI — from machine learning, artificial intelligence, and large language models, to data engineering and software engineering. We also have real-world experience deploying enterprise search and conversational AI projects using Google tools, as well as expertise in customizing Google services to customers' specific needs.

Ready to get started?

Fast-track employee adoption of AI with [Pythian's Agentspace QuickStart today](#)



About Pythian

Founded in 1997, Pythian is a data and analytics services company that helps organizations transform how they compete and win by helping them turn data into valuable insights, predictions, and products. From cloud automation to machine learning, Pythian designs, implements, and supports customized solutions to the toughest data challenges.

© Pythian Services Inc. 2025

Contact us

+1-866-798-4426 | info@pythian.com | [LinkedIn](#) | [X](#)

Offices

Ottawa, Canada
Minneapolis, USA
New York City, USA

London, England
Hyderabad, India
Bangalore, India

love your **data**